

THURSDAY • AUGUST 7

10:00 a.m. REGISTRATION OPENS - Junior Ballroom

11:00 a.m. Opening Lunch - Salons 1-5

WELCOME

PRESIDENT ERIC MAYBERRY

NEW COUNTY PRESIDENT RECOGNITION

DEVOTION

JEFF PANNELL, CEO, Farm Bureau Insurance

MAHA RESEARCH INSIGHTS

TERRI MOORE

AFBF Vice President of Communications

12:30 p.m. BREAK

1:30 p.m. General Session 1 - Grand Ballroom

FARMERS SERVICE PANEL

*Alice Rhea, Jerry Swanks, Sherri Lay
and Chris Buie - Moderator*

CROP PROTECTION PANEL

*Ally Lynch, Elizabeth Burns-Thompson,
Liza Lockwood and Alan Meadows - Moderator*

3:30 p.m. Leadership Reception - Atrium

6:00 p.m. Dinner - The Factory at Franklin - Liberty Hall

Food line opens at 6:00

Program begins at 6:45

REMARKS

*Harrison Crenshaw, 4-H Congress Governor
and T. Wayne Williams, FFA National Officer Candidate*

AGRICULTURE IN THE CLASSROOM DONOR RECOGNITION

PROMOTION OF NEW TENNESSEE FARM BUREAU FOUNDATION

FRIDAY • AUGUST 8

7:30 a.m. REGISTRATION OPENS - Junior Ballroom

8:30 a.m. General Session 2 - Grand Ballroom

WELCOME

PRESIDENT ERIC MAYBERRY

THE WAR ON FOOD

ANDY CURLISS

National Pork Producers Council

9:30 a.m. BREAK

10:00 a.m. General Session 3 - Grand Ballroom

THE VIEW FROM WASHINGTON

STEPHEN VADEN

U.S. Deputy Secretary of Agriculture

11:00 a.m. BREAK

12:00 p.m. Closing Lunch - Grand Ballroom

WELCOME

PRESIDENT ERIC MAYBERRY

YF&R INTRODUCTIONS

GOLDEN EAR AWARD

UT and THE LAND GRANT MISSION

DONDE PLOWMAN

Chancellor, University of Tennessee, Knoxville

DOOR PRIZES

CLOSING REMARKS

GUEST SPEAKERS



U.S. DEPUTY SECRETARY OF AGRICULTURE STEPHEN VADEN

Stephen Vaden is the U.S. Deputy Secretary of Agriculture. His deep-rooted commitment to agriculture began on his family farm in Obion County. Judge Vaden previously served as General Counsel to the U.S. Department of Agriculture during President Trump's first term. In 2020, President Trump appointed Judge Vaden to serve on the U.S. Court of International Trade. He is a native of Union City and he still continues to help manage his family farm today.

FARMERS SERVICE PANEL



CHRIS BUIE

Chris is the operations manager for Farmers Service, Inc., helping farmers navigate tax returns, financial record keeping, estate planning and more.



ALICE RHEA

Alice works with Farm Bureau Tax Service in the Farm Business Analysis program covering southeast Tennessee. She is a native of Grainger County.



JERRY SWANKS

Jerry has been president of Meigs County Farm Bureau since 2015. He is a fifth-generation farmer raising cows, soybeans and corn on 1,200 acres.



SHERRI LAY

Sherri lives in Monroe County where she and her husband, Larry, own and operate East Tennessee Feed & Seed and also raise rows crops and beef cattle.

CROP PROTECTION PANEL



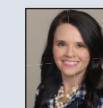
ALAN MEADOWS

Alan is a farmer from Lauderdale County, serving on the American Soybean Association Board of Directors. He grows soybeans, corn and wheat.



ALLY LYNCH

Ally is a member of Butler Snow's regulatory and government group, serving as a government relations advisor.



ELIZABETH BURNS-THOMPSON

Elizabeth serves as the executive director of Modern Ag Alliance, leading efforts to advocate for essential crop protection tools for farmers.



LIZA LOCKWOOD

Dr. Lockwood is an emergency medicine physician and medical toxicologist with a long-standing interest in global health and tropical medicine.

TERRI MOORE



Terri Moore has served as the vice president of communications for American Farm Bureau Federation since 2019. She leads communications at the national level, collaborating with state Farm Bureaus across the country. Terri provides strategic direction and guidance in the areas of policy communications, crisis communications, marketing, digital media and consumer engagement. Previously, Terri was deputy director of communications at the White House, director of communications at USDA, chief of staff in the U.S. Senate and communications director for the governor of Nebraska. Terri began her career as broadcast journalist.

ANDY CURLISS

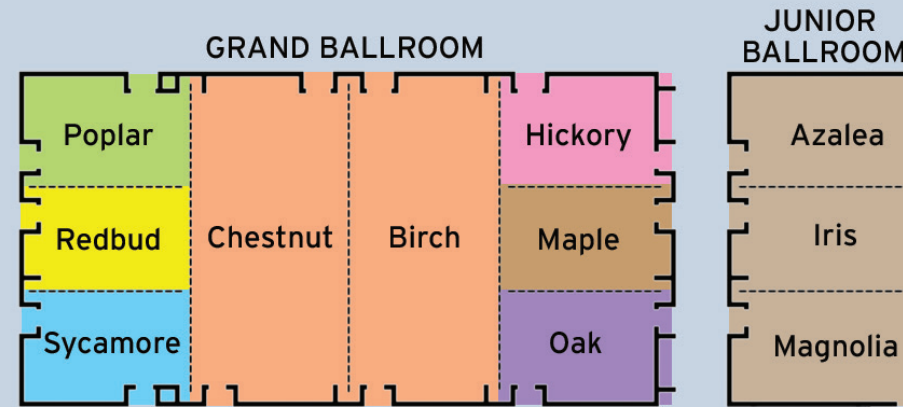


Andy Curliss currently serves on the leadership team of the National Pork Producers Council as vice president of strategic engagement. He works to engage within and outside of agriculture to advance the U.S. pork industry and all of agriculture, with a focus on competitive intelligence, research, analysis of competitive threats and engagements that support the full scope of modern production agriculture. He has been a leader in the pork sector over the past decade, serving previously as global director of external affairs at Smithfield Foods and, before that, as CEO of the North Carolina Pork Council.

CHANCELLOR DONDE PLOWMAN



Donde Plowman has served since 2019 as chancellor of the University of Tennessee, Knoxville, the state's flagship land-grant research university. In that time, the university has set new records in student retention and graduation, research, instructional spending, alumni giving, and state support. Under Chancellor Plowman's leadership, the university has increased its research expenditures to a record \$380 million by shifting its focus from individual efforts to big collaborative projects. This change in emphasis has fueled creative solutions and new technologies as well as expanded innovation and economic development partnerships with companies including AT&T, Eastman and Volkswagen.



EMBASSY SUITES

820 Crescent Centre Drive, Franklin, TN 37067
(615) 515-5151

WI-FI:

Network: Presidents Conference
Password: TFBF2025

BUS SCHEDULE:

Thursday: 7:00 AM - 5:30 PM
Friday: 7:00 AM - 2:00 PM

QUESTIONS FOR A SPEAKER?

Text to 931-262-2477
any time during the session.



Farm Bureau Store

Harpeth Room (next to lobby)

THURSDAY:
10:00 AM - 4:00 PM

FRIDAY:
7:30 AM - 12:00 PM



THE *Voice of Agriculture*®

85TH ANNUAL

Presidents Conference

AUGUST 7-8, 2025

Embassy Suites
Franklin, Tennessee